



* All images in this datasheet are for illustrative purposes only.

Stretch Signage 37BH7N

Bring the Remaining Space to Life with Space-fitting 32:9 Widescreen



32:9 Wide Screen



Slim Design



700 nit Brightness



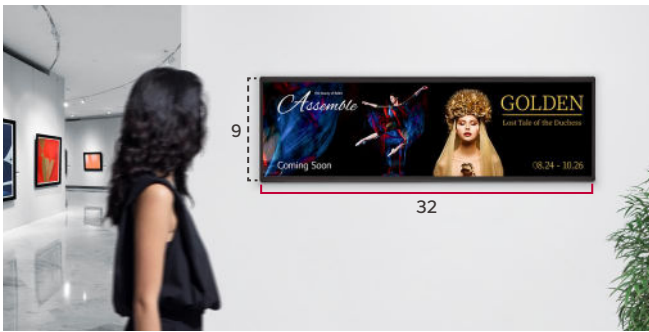
Convenient Maintenance



webOS Solution

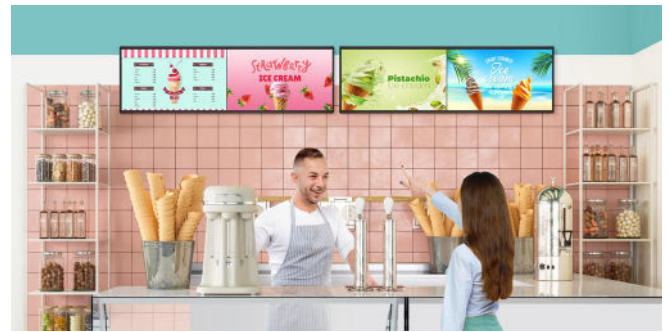
37BH7N

Size	37"
Resolution	1,920 × 540
Brightness	700 nit
Product Size	922.3 × 288.3 mm
Solution	SuperSign CMS, SuperSign Control+, SuperSign WB, Mobile CMS, LG ConnectedCare



32:9 Extended Wide Format

It is a unique wide screen with 32:9 bar type which provides much more flexibility in content than the conventional display of 16:9 ratio.



Picture-by-Picture (PBP) Mode

The Picture-by-Picture (PBP) feature allows you to show multi content in one single display. It is very useful and convenient to deliver various advertisements or pieces of information at the same time.



Customizable Angle to Suit Customer's Eye Level

With a tilting capability of 30° when installed at a higher height, BH7N enhances customer perception and satisfaction.



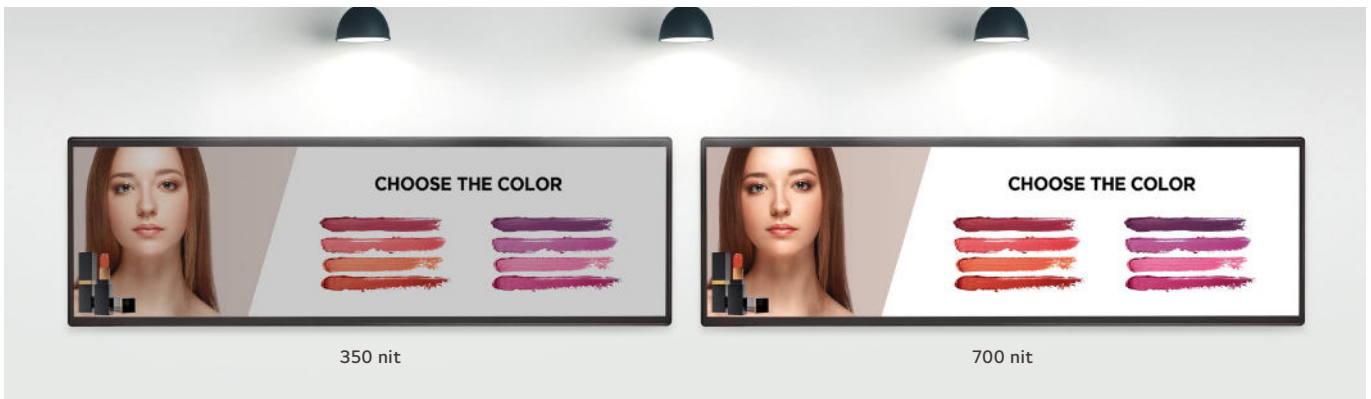
Portrait/Landscape Mode

BH7N can be used vertically as well, allowing for flexible utilization in various installation/usage scenes in both horizontal and vertical orientations. It can be utilized for displays according to the characteristics and size of unused and leftover spaces.



Highly Reliable in High Humidity Environments

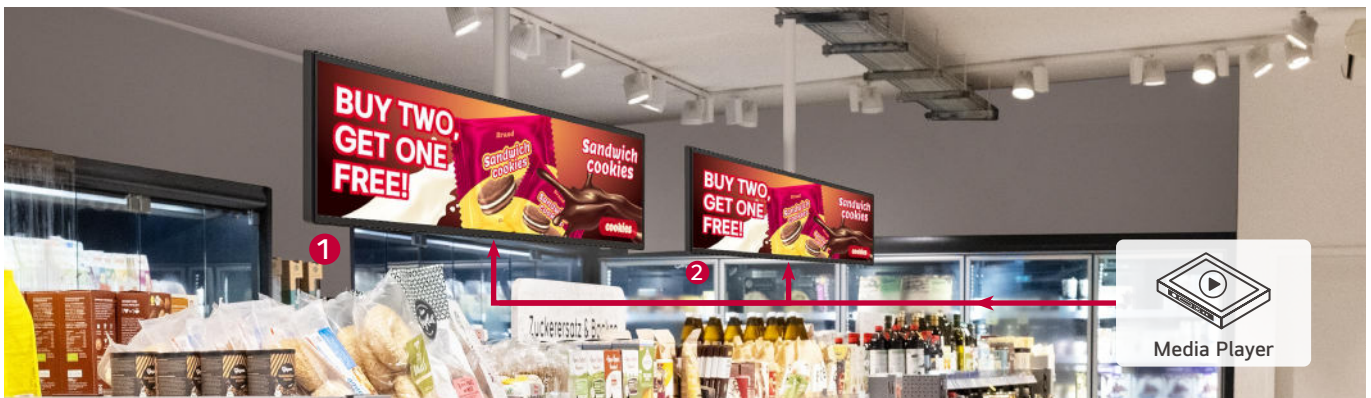
Optimized for business environments, the BH7N is protected against salt, dust, iron powder and humidity thanks to conformal coating on power board, allowing for stable operation.



Indoor Display Offering a Vivid and Sharp Visual Experience

With a great brightness of 700 cd/m², the BH7N series clearly deliver content and attract public attention, making it suitable display for marketing in airports, retail, shopping malls etc.

* The provided image is intended for comparison purposes only.



Daisy Chain Management

A daisy chain allows you to conveniently and efficiently play the same content on multiple displays using just one media player. This eliminates the need to install separate media boxes for each display, as the entire operation can be handled by a single media player, ultimately resulting in cost savings during installation.

* You can play media by connecting an external HDMI.



High Performance with LG webOS 6.0

LG webOS 6.0 is available on BH7N series for a smooth execution of several tasks. LG webOS smart signage platform enhances user convenience with intuitive GUI.*

* GUI : Graphical User Interface

* The provided image is solely for reference.



Real-Time Monitoring with LG ConnectedCare

Easy and Fast maintenance are available with our optional cloud service solution LG ConnectedCare*. It remotely manages the status of displays in client workplaces for fault diagnosis and remote-control services, ensuring the stable operation of clients' businesses.

* LG ConnectedCare is the brand name of LG Signage365Care Service. The availability differs by region.

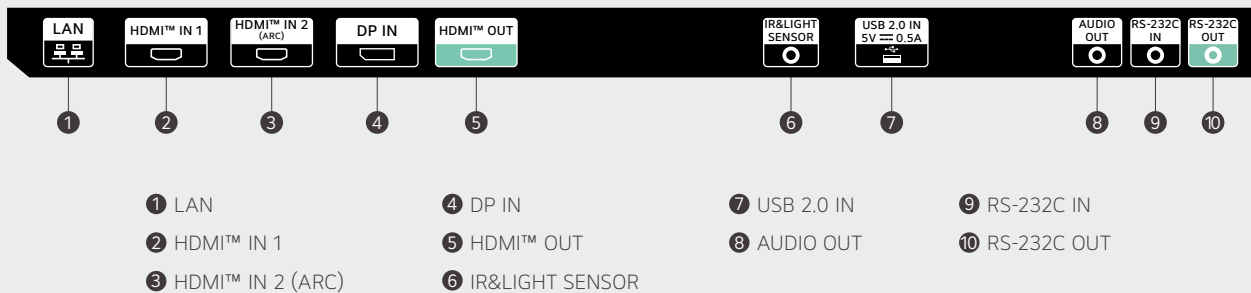


SuperSign

SuperSign is an integrated and intuitive content management solution for creative and organized digital signage content in your space, connecting customers to a range of services with convenient user experiences. There are a variety of versions such as SuperSign Cloud, so discover and enjoy the version that best fits you.

CONNECTIVITY

37"



Download
LG C-Display+
Mobile App
Google Play Store

- www.lg.com/global/business/information-display
- www.youtube.com/c/LGCommercialDisplay
- www.facebook.com/LGInformationDisplay
- www.linkedin.com/company/LGinformationdisplay
- twitter.com/LG_ID_HQ

LG may make changes to specifications and product descriptions without notice. Copyright © 2023 LG Electronics Inc. All rights reserved. "LG Life's Good" is a registered trademark of LG Corp. The names of products and brands mentioned here may be the trademarks of their respective owners.

