

BIM Pro Parameters

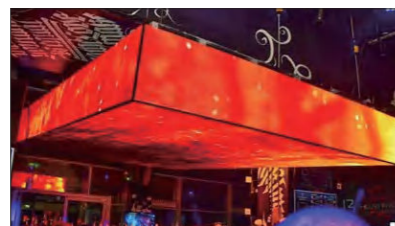
Model	BIM Pro 1.6	BIM Pro 1.9(HCC)	BIM Pro 1.9	BIM Pro 2.6	BIM Pro 4
Pixel Pitch (mm)	1.6	1.9	1.9	2.6	4
Physical Density (dot/m ²)	390625	257433	255669	140625	62500
LED Type	SMD1010	Mini LED	SMD1515	SMD2121	SMD2121
Module Size (mm*mm)	256*288	256*288	256*288	256*288	256*288
Module Resolution(px*px)	160*180	130*146	130*145	96*108	64*72
Viewing Angle (Deg)	140° (H)/150° (V)	140° (H)/150° (V)	140° (H)/150° (V)	140° (H)/150° (V)	140° (H)/150° (V)
Brightness (nits)	800	850	850	1000	800
Gray Scale (bit)	16	16	16	16	16
Refresh Rate (Hz)	3840	3840	3840	3840	3840
Max. Power Consumption(W/m ²)	644	671	515	515	515
Average Power Consumption(W/m ²)	254	268	203	203	203
Cabinet Size(mm*mm*mm)	1024*288*40 / 768*288*40 / 512*288*40				
Cabinet Weight (±0.25kg)	7 / 6 / 5				
Input Voltage (AC)	110-220V	110-220V	110-220V	110-220V	110-220V
Ingress Protection	IP20	IP20	IP20	IP20	IP20
Working Environment	户内	Indoor	Indoor	户内	户内
Certificates	ETL/FCC/CE/EMC	ETL/FCC/CE/EMC	ETL/FCC/CE/EMC	ETL/FCC/CE/EMC	ETL/FCC/CE/EMC

*Above product parameters are for reference only and may vary without notification. All rights reserved to Esdlumen.

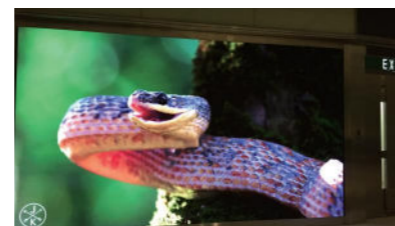
Application Reference



Shopping Mall



Ceiling



Window Advertising



BIM Pro

BIM Pro

Indoor Fixed · Ultra Light & Thin

LIANTRONICS CO.,LTD.

LianTronics Bldg., Antongda Industrial Zone, 3rd Liuxian Rd, 68 Block Baoan, Shenzhen, China

Hotline: +86-755-23001729

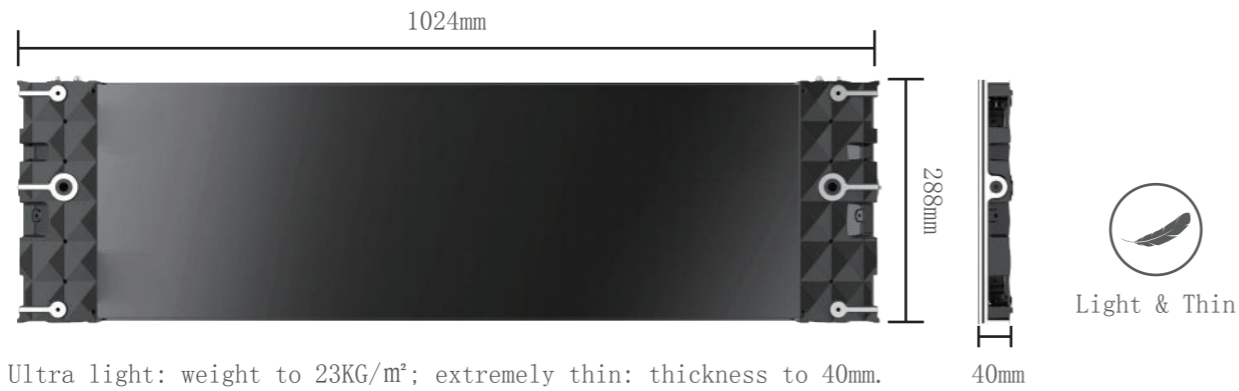
Website: www.liantronics.com

E-mail: service@liantronics.com



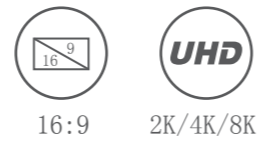
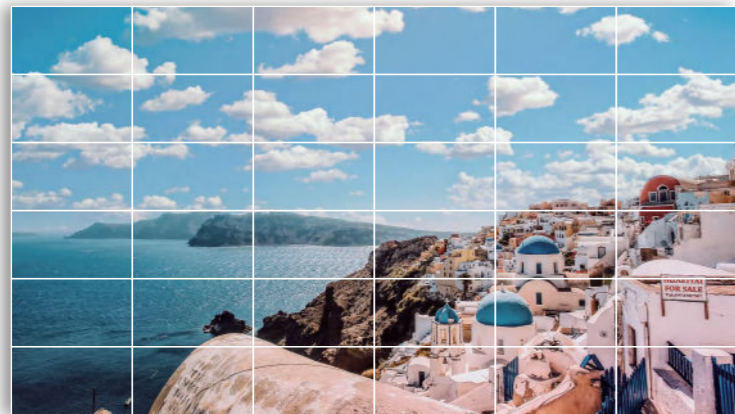
Website

◆ New Generation of BIM Series-BIM Pro



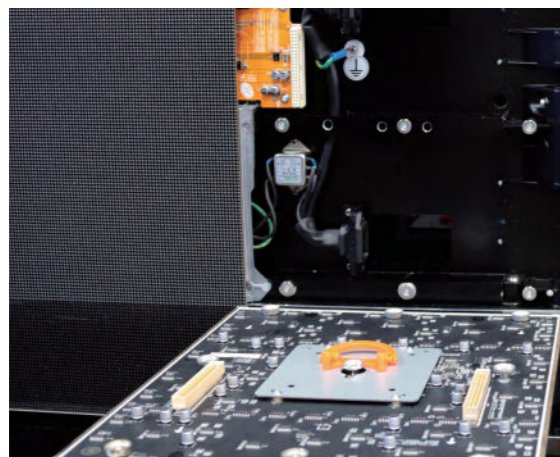
Ultra light: weight to 23KG/m²; extremely thin: thickness to 40mm.

◆ 16:9 Golden Ratio, Easily Splicing 2K/4K/8K Screen, Better Visual Enjoyment

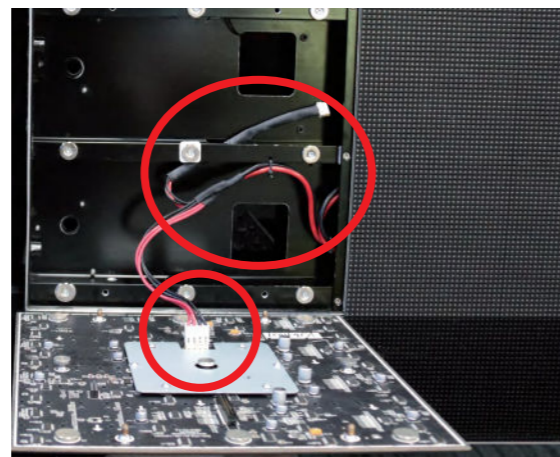


2K screen: 6*6 cabinets

◆ Wireless Connection Design: Simpler Inner Structure, Easy Maintenance

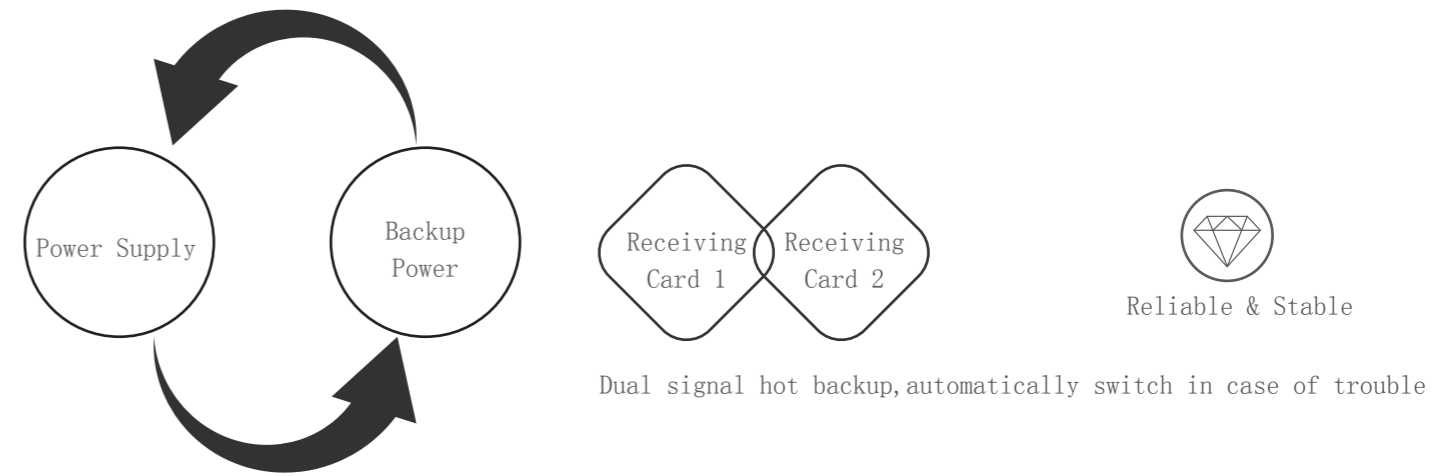


BIM Pro



The old design of BIM Series

◆ Double-backup of Power Supply and Receiving Card

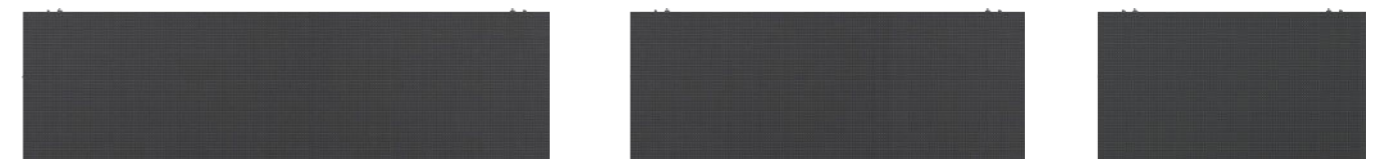


◆ Total Front Maintenance, Various Installation Methods



Support stacking installation, hanging, wall-mounted, ceiling, etc.

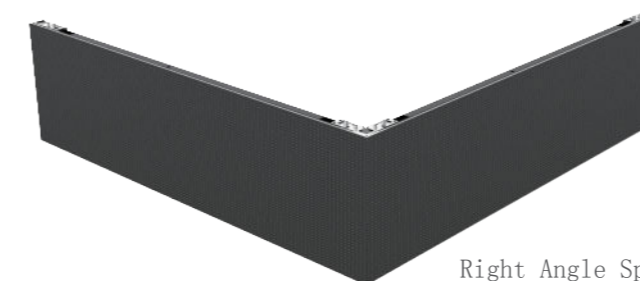
◆ Various Sizes and Customized Cabinet Angle (0-45°) for Flexible Splicing



1024*288*40

768*288*40

512*288*40



Right Angle Splicing

