



RBM-I050PQB

10.1" Touch Panel PC

10.1" Touch Panel PC ideal for multi-purpose information or interactive content display with LED status lights & NFC embedded



Highlight Features



Slim Chassis depth

Less than 3cm when installed on wall.



NFC (Near Field Communication)

Support interactive RFID/Mifare/FeliCa



Glass / Surface / VESA Mount

Mountable on all surfaces.



BLE Beacon

Location positioning and pro-active broadcast to targeted audiences with highly contextual, meaningful message or advertisements to their smart devices.



PoE+ (Power over Ethernet)

Single cable; clean installation. IEEE 802.3at standard.



LED Lights

Colorful & manageable signal light.



RTSP / HTTP Streaming

RTSP - Playback continuous and reliable real-time streams.

HTTP - Playback streams from a comprehensive web-based media platform.

10.1" TOUCH PANEL PC

The 10.1" Touch Panel PC is designed for all round purpose informative display which can be mounted on any surface, allowing different interactive integrations and with the modern design, it is self complementing whilst presenting designated information, even on translucent glass which ensure it stays on with clean installations.





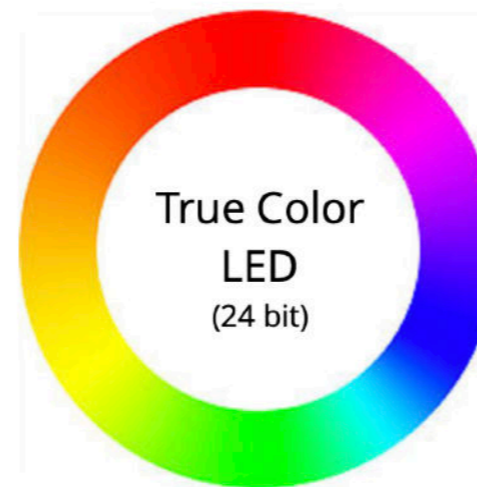
STYLISH COLORS

The TD-1050 is comprised of modern and sexy design with a choice of three colors that complements any environment whether it's a country side lodge or a futuristic office interior decor.



VIBRANT STATUS LED LIGHTS

The D-1050 10.1" Display Panel PC is designed with 3 sided LED lights that provides straight forward status indication which is customizable from a choice of stunning True-Color palette.





NFC EMBEDDED

Near Field Communication.



DUAL 2W INTERNAL SPEAKERS

A pair of internal 2W enhanced speakers gives extra interactive ability to any of your multimedias or informative content.



X2 USB INPUT PORTS

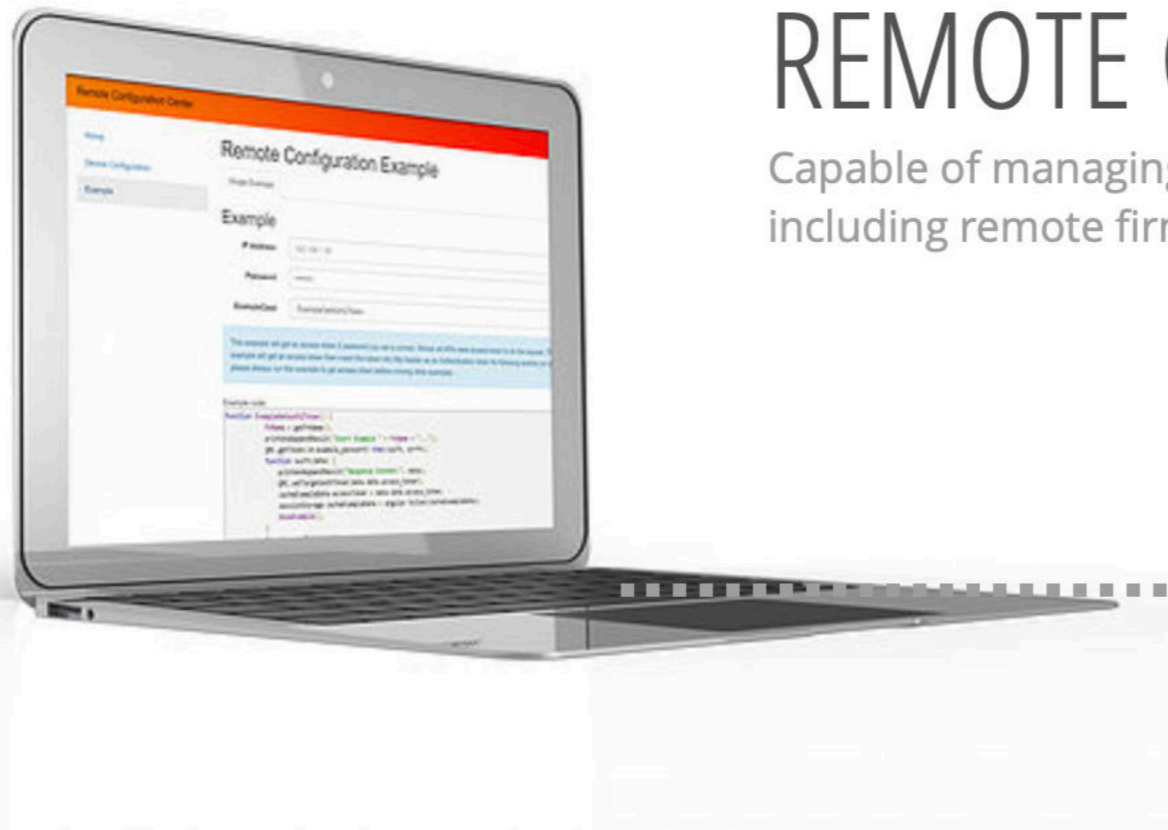
The extra diversity to manage your device or contents directly from external peripherals or expand the application with unimaginable possibilities.





UNIVERSAL I/O PORTS

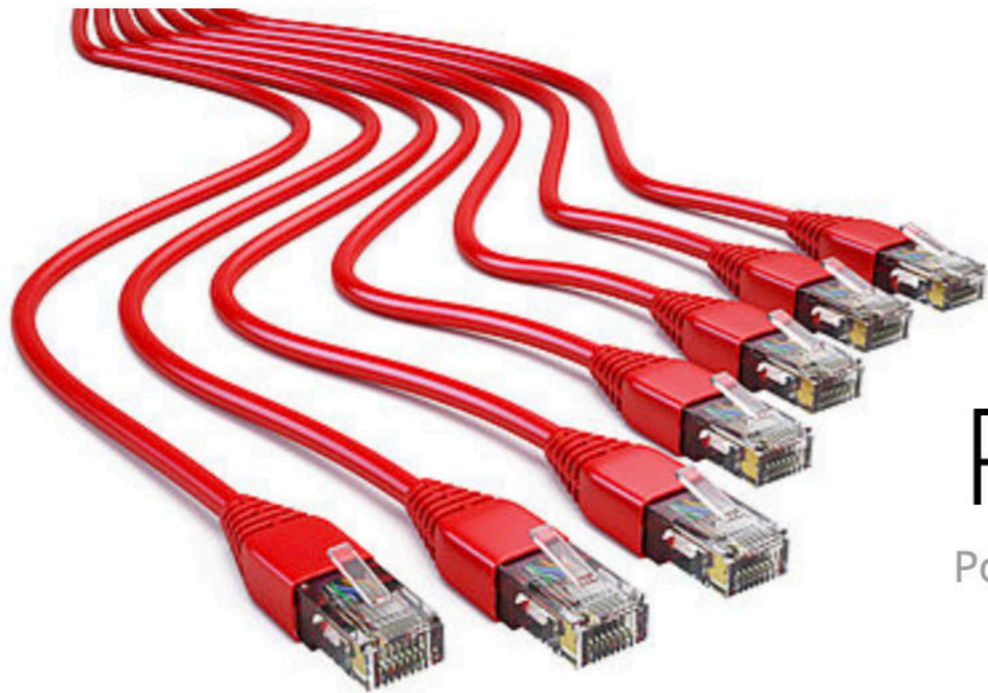
Connectivity made easier with universal ports.



REMOTE CONFIGURATION

Capable of managing, controlling, setting multiple devices anywhere at any time, including remote firmware update.





PoE+ (POWER over ETHERNET)

Power up your device over single network cable (RJ45). Clean installation



WALL BRACKET MOUNTS

Qbic's TD-1050 is designed with a unique wall bracket that lets you mount the Panel PC on just about any surface you can imagine, even on glass walls !

Features	
Programming API	HTML5 / SMIL / Android SDK
CPU	ARM quad-core 1.6GHz
Memory	2GB DDR3
Storage	8GB eMMC
Video decoder	H.264 / MPEG-4
Image codecs	JPEG/PNG (Max. 1920 x 1080)
Orientation display	Landscape
Audio codecs	MP3
NFC/RFID	Std. Opt.: H Version, (Embedded Human-Interface-Device)
PoE+	Yes
Beacon (BLE)	Yes
Display	
Size	10.1"
Resolution (Max.)	1280 x 800
Brightness	300 nits
Contrast ratio	1000 : 1
Touch	Yes
Viewing angle (H/V)	178°/178°
I/O Interface	
Ethernet	1 x RJ45 (10M/100M)
WLAN	802.11 b/g/n
USB	2 x USB2.0 type / 1 x Micro USB (ADB)
Analog Stereo out	1 x 3.5mm stereo
Expansion storage	1 x Micro SDHC slot
Speaker	2W x 2
Camera	1 x 2M pixel

Mechanical & Environment	
Dimension (WxDxH)(Without stand)	261.1 x 193.3 x 27mm (10.28" x 7.61" x 1.06")
Weight	710g / 1.56 lbs
Mounting	Glass / Surface / Recessed
Housing	Plastic
Environment	Operating Temp. 0~50·C
	Storage Temp. -20·C to 60·C
	Humidity: 10 to 85% (non-condensing)
Power	DC 12V, 1.5A
Certification	CE/FCC/BSMI/NCC/IC/CCC/SRRC/IMDA/BIS/WPC/RoHS



Main Office

Viale Lombardia, 51/53
20861 Brugherio (MB) Italy

Registered Office

Viale Certosa, 223
20151 Milan (MI) Italy

Contacts

Phone: +39.039.28.72.429
Email: enquiry@avstore.tv

Social

 www.facebook.com/AVstore.tv
 www.twitter.com/@AVstore_tv

AVstore is a trademark of Voome Networks S.r.l.

shop.avstore.tv

