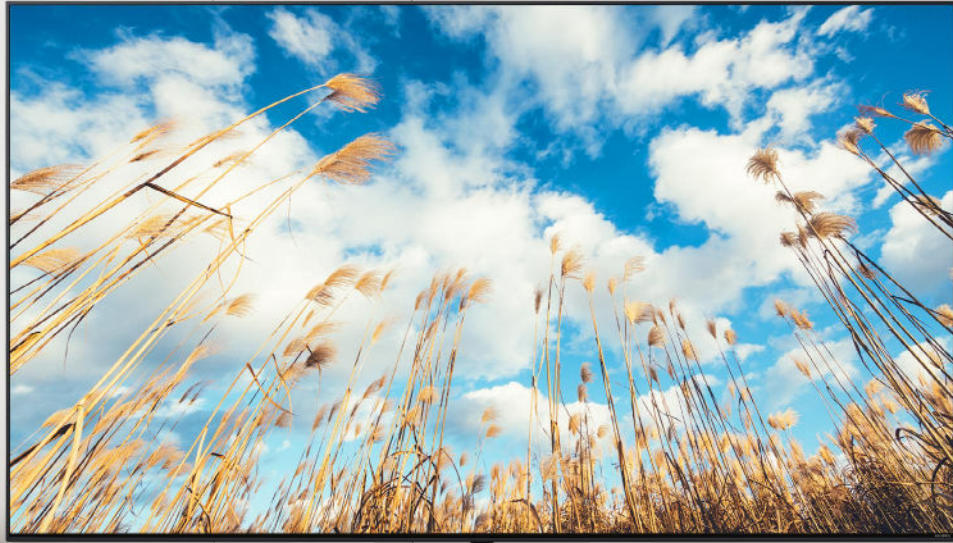


* 65 inch



65"

* All images in this datasheet are for illustrative purposes only.
* TV stand is sold separately.

55"/50"/43"



Commercial TV UM767H (EU/CIS)

4K UHD Smart TV with Pro:Centric Cloud



4K UHD



Pro:Centric Cloud



Pro:Centric Direct



Pro:Idiom

UM767H (EU/CIS)		65/55/50/43UM767H0LJ, 43UM767H0LC (Austria only)
Design	Stand Type	No Stand * For Accessory : 1 pole (65": Fixed / 55"/50"/43": Swivel)
Display	Inch	65" / 55" / 50" / 43"
	Resolution	3,840 × 2,160 (4K UHD)
Broadcasting System	Digital	DVB-T2/C/S2
	Analog	SECAM / PAL
VESA	65" / 55"	300 × 300
	50" / 43"	200 × 200

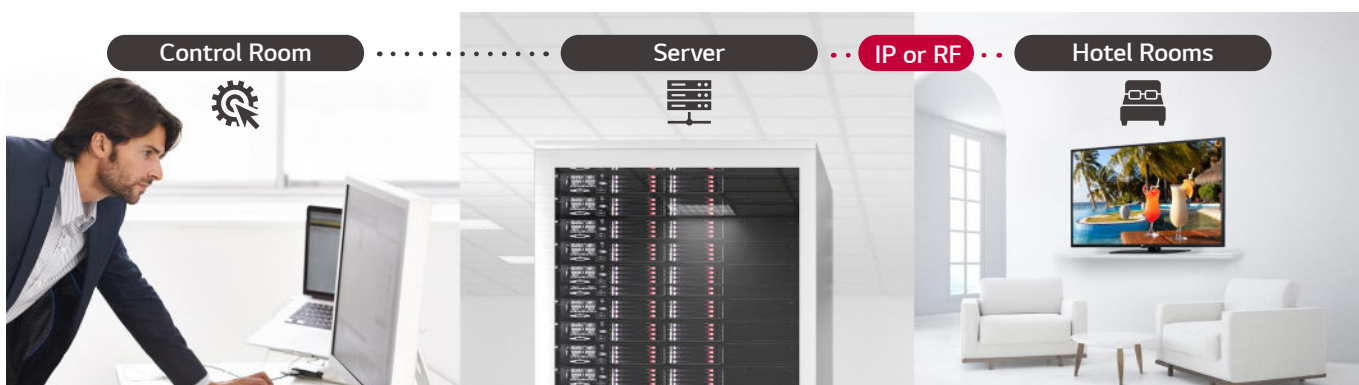
* 1 pole TV stand accessory is sold separately.



Pro:Centric Cloud

Pro:Centric Cloud improves the usability of enterprise's CMS solution and cloudification of system, reinforcing the service of 3rd party solution. It also offers various design templates, improving data collection and analytics platform with an eye-catching dashboard. In addition with new features; LG Channels provides a convenient way to access wide range of content from CP (Content Provider) channels including broadcast TV channels without additional devices or subscriptions. And Mobile Application Creator lets you simplify the process of setting up concierge services on mobile device for guests. Through this function, the guest' request will be satisfied with immediate response.

* Currently supports in Germany, Spain, France, Finland, Ireland, Austria, Italy, Switzerland, Portugal and please check with your local sales for other EU countries.



Pro:Centric Direct

The hotel content management solution Pro:Centric Direct offers easy and simple editing tools, making it easy to perform service and IP network-based remote management with a single click. The Pro:Centric Direct solution enables users to edit their interface easily by providing customized interface and efficiently manages all TVs in the room. It provides IoT-based in-room control that will be your starting point to prepare for the hotel rooms of next generation through artificial intelligence.

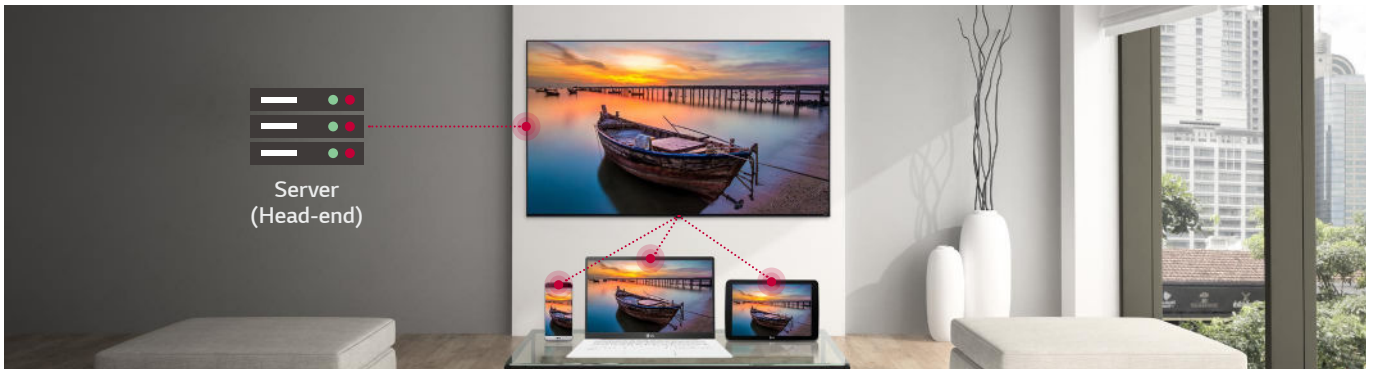
* Some features may not be supported based on PCD versions.



Slim Depth for a Sleek Look

With a slim design, the UM767H series integrates smoothly into the interiors, delivering a modern impression to guest.

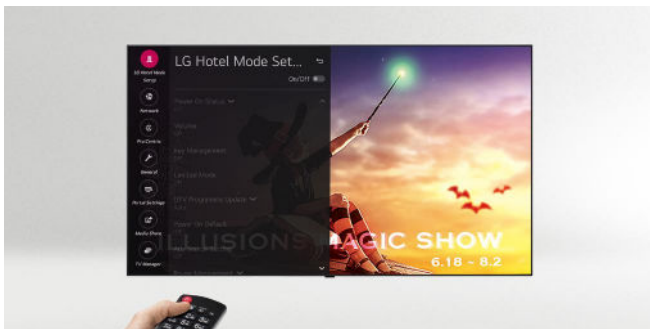
* All images are for illustrative purposes only.



SoftAP

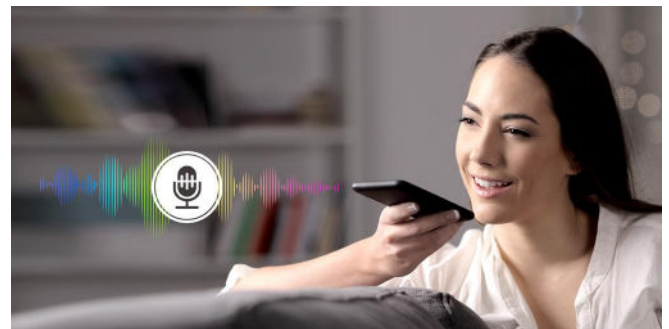
Software-enabled Access Point (SoftAP) is a "virtual" Wi-Fi feature that uses TV as a wireless hotspot, enabling guests to connect their own devices to the SoftAP. It supports Bridge Mode, allowing administrators to manage in-room SoftAP information such as signal level, SoftAP passwords, etc.

- * SoftAP should be set in the installation menu after the TV is turned on.
- * Screen Share may not be operated at the same time.



Hotel Mode (Public Display Mode)

From channel selection to volume level, you can control the TV settings in business areas. It also enables you to restore default settings, as required, on the TVs.



Voice Recognition

For seamless interaction and user satisfaction, LG has applied voice recognition function to the LG UM767H TV. This feature makes it easy to control the TV without pressing the button of remote controls.

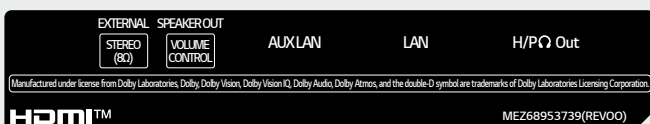
- * Magic Motion Remote is required (sold separately).

* All images are for illustrative purposes only.

CONNECTIVITY

65" / 55" / 50" / 43"

Vertical



Side



Download
LG C-Display+
Mobile App
Google Play Store

- www.lg.com/global/business/information-display
- www.youtube.com/c/LGCommercialDisplay
- www.facebook.com/LGInformationDisplay
- www.linkedin.com/company/LGinformationdisplay
- twitter.com/LG_ID_HQ

LG may make changes to specifications and product descriptions without notice. Copyright © 2023 LG Electronics Inc. All rights reserved. "LG Life's Good" is a registered trademark of LG Corp. The names of products and brands mentioned here may be the trademarks of their respective owners.